

PATENTED TECHNOLOGY

Fixscreen® Mono AK^{EVO} & Fixvent® Mono AK^{EVO}

Windproof sun protection + insect resistance
(+ ventilation)

Fixscreen® Mono AK^{EVO} & Fixvent® Mono AK^{EVO}

RENSON® offers with the Fixvent® Mono AK^{EVO} and Fixscreen® Mono AK^{EVO} an aesthetical and comfortable solution which combines windproof sun protection, insect resistance and, in case of the Fixvent®, even ventilation.

Both products can perfectly be combined with each other (within one specific project as well as within one certain space), thanks to their same 'look & feel' features. These products allow an easy and smooth overframe installation for window depths between 50 and 215 mm. Thanks to the patented Connect&Go®- and Click&Safe®-technology, an easy (dis)mounting of the screen tube can be guaranteed.

The box as well as the screen itself meet the needs of a high stability and consistency. On the one hand official tests (according to the STS52.0-norm) guarantee a minimal distortion of the box at high windloads at the window, and on the other hand the Fixscreen®-technology provides a tight and windproof screen up to 130km/h. Then there is the Smooth-technology, which provides the zipper guides of a patented wear-resistant layer and makes the screen go up and down smoothly and silently.

The Fixvent® Mono AK^{EVO} and Fixscreen® Mono AK^{EVO} offer herewith following combinations:

- **High thermal comfort:**
 - solid U-values up to 0,32 W/m²K (EXTREME-version)
- **High visual comfort:**
 - control of incoming light
 - maximal see-through to the external side even with the screen completely down
- **High acoustic comfort:**

different acoustic levels available offering a solution to every situation

 - Fixvent® Mono AK^{EVO}
 - standard-version: up to 40 (-1;-4) dB
 - ULTRA-version: up to 45 (-1;-5) dB
 - EXTREME-version: up to 48 (-2;-5) dB
 - Fixscreen® Mono AK^{EVO}: up to 52 (-2;-5) dB
- **High aesthetical finish:**
 - hidden installation with a maximal respect for the architecture: can be installed on aluminium, wood, uPVC windows in all possible window depths
 - hidden weld seam at the height of the bottom bar
 - large screen surfaces possible: up to 21 m² (Fixscreen® Mono AK^{EVO} coupled in two parts with 2 motors)
- **High physical comfort (Fixvent® Mono AK^{EVO}):**
 - self-regulating flap: natural ventilation without any draft
 - controllable airflow: manual, with rod or motorized
 - incoming air guided in upwards position to ensure a comfortable indoor climate
= i-Flux® technology: optimal comfort, minimal energy loss



Fixscreen® Mono AK^{EVO} & Fixvent® Mono AK^{EVO}



Fixvent® Mono AK^{EVO}

- Ideal solution for new-build, (large) renovations and projects
- Constant supply of fresh and healthy air: self-regulating as from 2 Pa
- 3 levels of sound absorption in open position:
 - Fixvent® Mono AK^{EVO}: up to 40 (-1;-4) dB
 - Fixvent® Mono AK^{EVO} Ultra: up to 45 (-1;-5) dB
 - Fixvent® Mono AK^{EVO} Extreme: up to 48 (-2;-5) dB



Fixvent® Mono UT^{EVO}

- Especially developed for utility buildings in which both the natural air supply and mechanical extraction are located in the same room
- Ideal solution for rooms with a high occupancy (as class rooms, offices, ...)
- Constant higher level of basic ventilation: self-regulation as from 10 Pa
- 2 levels of sound absorption in open position:
 - Fixvent® Mono UT^{EVO}: up to 40 (-1;-4) dB
 - Fixvent® Mono UT^{EVO} Ultra: up to 45 (-1;-5) dB
- No visual difference with Fixvent® Mono AK^{EVO}



Fixscreen® Mono AK^{EVO}

- Ideal solution for new-build, (large) renovations and projects
- Easily combinable with Fixvent® Mono AK^{EVO}: same look and feel
- Sound absorption up to 52 (-2;-5) dB

Guarantee	
5 year guarantee	Against any defects occurring during normal use and maintenance
7 year guarantee	Fixscreen®- technology : zip remains in side channel
10 year guarantee	concerning the coating of aluminium elements
Guaranteed wind resistance	130 km/h (wind class 3) (screen placed in closed position before a window construction)

For further details: see the warranty certificate

Fixvent® Mono AK ^{EVO}	Small	Medium	Large	X-Large	XX-Large
Airflow					
Equivalent Area					
Fixvent® Mono AK ^{EVO}			18324 mm ² /m		
Fixvent® Mono AK ^{EVO} ULTRA			4836 mm ² /m		
Fixvent® Mono AK ^{EVO} EXTREME			2800 mm ² /m		
Fixvent® Mono UT ^{EVO}			19724 mm ² /m		
Fixvent® Mono UT ^{EVO} ULTRA			4836 mm ² /m		
Q at 1 Pa					
Fixvent® Mono AK ^{EVO}			12,8 l/s/m		
Fixvent® Mono AK ^{EVO} ULTRA			3,7 l/s/m		
Fixvent® Mono AK ^{EVO} EXTREME			2,1 l/s/m		
Fixvent® Mono UT ^{EVO}			15,5 l/s/m		
Fixvent® Mono UT ^{EVO} ULTRA			3,7 l/s/m		
Comfort					
Sound reduction $D_{new}(C;C_{tr})$ in open position (screen up)					
Fixvent® Mono AK ^{EVO}	33(0;-2)dB	35(0;-3)dB	36(-1;-4)dB	37(-1;-4)dB	40(-1;-4) dB
Fixvent® Mono AK ^{EVO} ULTRA	n.a.	38(0;-2)dB	40(-1;-4)dB	43(-1;-4)dB	45(-1;-5)dB
Fixvent® Mono AK ^{EVO} EXTREME	n.a.	43(0;-3)dB	43(0;-3)dB	46(-1;-4)dB	48(-2;-5)dB
Fixvent® Mono UT ^{EVO}	33(0;-2)dB	35(0;-3)dB	36(-1;-4)dB	37(-1;-4)dB	40(-1;-4) dB
Fixvent® Mono UT ^{EVO} ULTRA	n.a.	38(0;-2)dB	40(-1;-4)dB	43(-1;-4)dB	45(-1;-5)dB
Technical specifications					
Self-regulating at 2Pa	yes (UT-version at 10 Pa)				
Thermally broken	yes				
U-value (W/m ² K)					
Fixvent® Mono AK ^{EVO}	1,47	0,98	0,80	0,77	0,72
Fixvent® Mono AK ^{EVO} ULTRA	n.a.	0,70	0,55	0,46	0,41
Fixvent® Mono AK ^{EVO} EXTREME	n.a.	0,62	0,47	0,38	0,32
Fixvent® Mono UT ^{EVO}	1,47	0,98	0,80	0,77	0,72
Fixvent® Mono UT ^{EVO} ULTRA	n.a.	0,70	0,55	0,46	0,41
Airflow leakage in closed position	< 15% at 50 Pa				
Insect mesh	yes				
Control					
Screen	motor control, manually (not for Ultra/Extreme)				
Ventilation flap	manually, rod, motor				
Dimensions					
Box					
Box height (mm)	132				
Box width (mm)	167	197	227	257	287
Compatible window depths (mm)	50-94	95-124	125-154	155-184	185-215
Screen: max. WxH (mm)+max. surface					
Single (1 screen - 1 control)	4000 x 3000 (12 m ² for motor control; 7,5 m ² for manual control)				
Coupled (2 parts - 2 motors)	6000 x 3000 (18 m ²)				
Bottom bar (D x H) (mm)	30 x 57				



Outer view Fixvent® Mono AK^{EVO}



Outer view Fixscreen® Mono AK^{EVO}



Detail bottom bar (integrated seam)

Fixscreen® Mono AK ^{EVO}	Small	Medium	Large	X-Large	XX-Large
Comfort					
Sound reduction $D_{new}(C;C_{tr})$ (screen up)	47(-1;4)dB	50(-1;-3)dB	50(-1;-3)dB	50(-1;-3)dB	52(-2;-5)dB
Technical specifications					
Thermally broken	yes				
U-value (W/m ² K)	0,92	0,53	0,54	0,54	0,55
Insect mesh	yes				
Control					
Screen	motor control, manually				
Dimensions					
Box					
Box height (mm)	132				
Box width (mm)	167	197	227	257	287
compatible window depths (mm)	50-94	95-124	125-154	155-184	185-215
Screen: max. WxH (mm)+max. surface					
Single (1 screen - 1 control)	4000 x 3500 (14 m ² for motor control; 7,5 m ² for manual control)				
Coupled (2 parts - 1 motor)	6000 x 3000 (18 m ²)				
Coupled (2 parts - 2 motors)	6000 x 3500 (21 m ²)				
Bottom bar (D x H) (mm)	30 x 57				

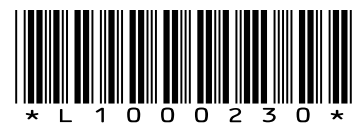


RENSON® reserves the right to make technical changes to the products shown. The latest brochures may be downloaded from www.renson.eu

RENSON® Export Department • Tel. +32 (0)56 62 71 11 • export@renson.net

RENSON® Sunprotection-Screens NV
IZ 1 Flanders Field • Kalkhoevestraat 45 • B-8790 Waregem
Tel. +32 (0)56 62 65 00 • Fax +32 (0)56 62 65 09
export@renson.be • www.renson.eu

RENSON® Fabrications LTD
Fairfax Units 1-5 • Birchholt Road • Parkwood Industrial Estate • Maidstone • Kent ME15 9SF
Tel. 01622/754123 • Fax 01622/689478
info@rensonuk.net • www.renson.eu



Creating healthy spaces

